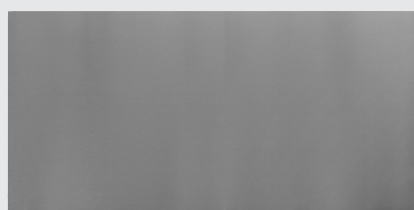


Assembly Instructions: PROM03

Components (you will require a slotted and a Phillips head screwdriver)



1x Correx
Wrap Panel



2x
End Caps



1x
Wooden Base



1x
Countertop



2x Tapered
Screw Poles



2x Header
Poles



1x
Header



1x Hook &
Loop Tape



2x
Pole Bolts

1. Attach the end caps to each of the short edge sides of the Correx wrap panel.

Take the roll of hook and loop tape and remove part of the backing. Working slowly, line up the tape with the long edge of the wrap panel and adhere to the panel, ensuring the flexible slatted side of the panel is facing upward.

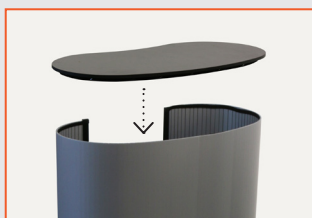
Trim the excess tape to the edge of the end cap and repeat this process for the remaining long edge of the panel.



2. Place the wooden base (identified by the lack of holes) on a flat surface. Align the end cap with the start of the recessed curved retainer on the base and squeeze the hook and loop tapes together. Carefully press the panel to wrap around the curved retainer and create the structure.



3. Take the wooden countertop and match the structure process from the previous step. Carefully but firmly press the top of the countertop while pushing the panel to the recessed curved retainer, completing the structure. If not using the optional header, flip the stand to hide the countertop holes.



4. To add the optional header, push a pole bolt from underneath the countertop and thread through the hole. While holding the bolt in place, screw a tapered screw pole onto the bolt and tighten. Slot the header pole to the top of the tapered pole and repeat for the remaining side. Slot the header holes onto the top of the header poles to complete the unit.

