

Components (you will need a drill, tape measure, wire cutter, pencil and paper for note taking)

4x Wall screws

4x Rawl plugs

2x Power cable fixings

4x Wall fixings (wall-mounted kit only)

2x Cable and fixings set

LED panels

24x Connector cables (3 sets of 8 in different lengths)

1x Power cable connector (white)

1x Transformer cable

1x Mains power cable

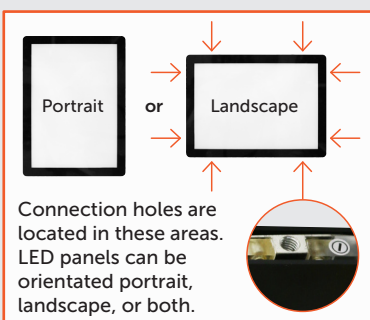
1x Allen keys (2 sizes)

Please note: The amount of components received will be dependent on the kit purchased. Fixings and tools not included.

Connecting the light panels

In order to correctly install your premium cable kit, you need to assemble the LED panels before installing the cables.

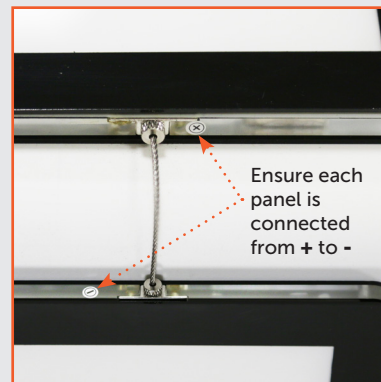
1. Each LED panel has 8 fixing holes for cable connections, 2 on each side. Each panel has magnetic openings on 2 sides to suit both orientations. We advise the openings for each panel face upwards for easy future poster changes.



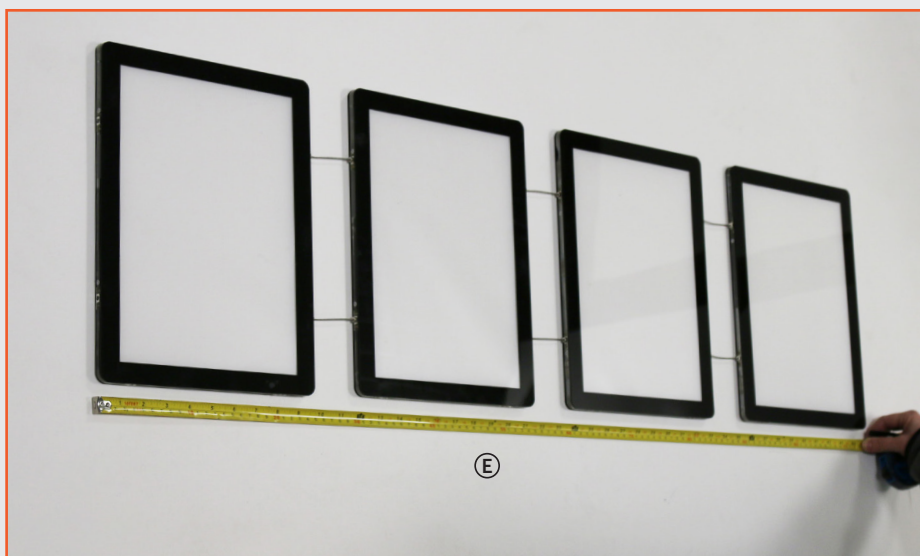
2. Each kit comes with 3 different lengths of connector cable. Select your preferred length of cable and connect your panels together by screwing them into the fixing holes.



Each fixing hole has a + or - label. Make sure that you screw a + into a - as this will ensure that the LEDs work when the display is connected to the mains power.



3. Measure the total height of your panel configuration (E). This is the distance between the top of the first panel, to the bottom of the last panel. Make a note of this measurement, you will need to refer to it when you install the cables.



1. Refer to the table below to find the distance between the fixing holes on the top of your LED panels. Mark out the positions for your ceiling/upper wall fixings. We recommend leaving 8-10cm between the fixings and your window. Having marked out the position for the upper fixings, use a plumb bob to mark the location for the lower fixings.

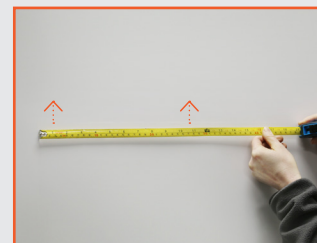
| Size | Distance between fixing holes |
|------|-----------------------------------|
| A1 | Landscape: 700mm, Portrait: 480mm |
| A2 | Landscape: 480mm, Portrait: 310mm |
| A3 | Landscape: 310mm, Portrait: 170mm |
| A4 | Landscape: 170mm, Portrait: 170mm |



Ceiling to floor:

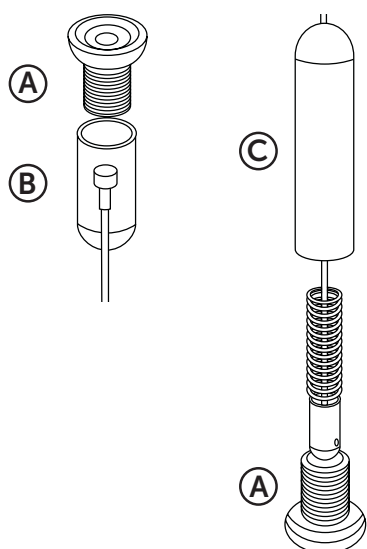


Wall mounted:

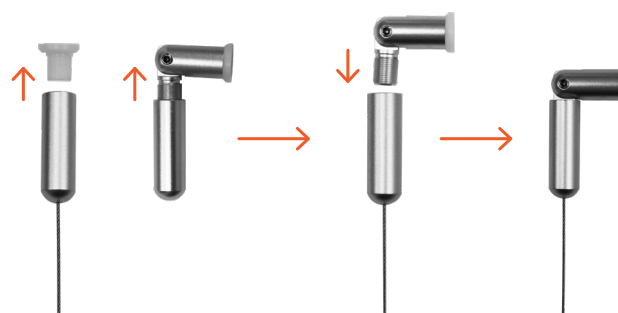
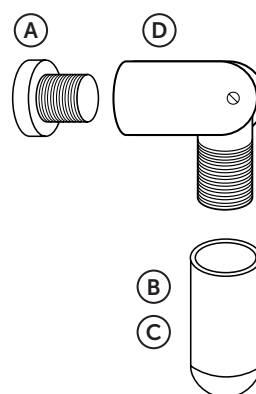


Components

Cable fixings (all kits)



Wall fixings (wall-mounted kits only)



Wall-mounted kits only: Before installing the cables, find the 4 wall fixings. Unscrew the fixing plates (A), upper fixings (B) and lower fixings (C) to leave just the hinged wall-mount fixings (D). Put the 4 wall-mount fixings to one side to use in the next step.

2. Unscrew the fixing plates (A) from the upper fixings and lower fixings. Drill pilot holes into your marks. Use a screwdriver or drill to secure the fixing plates to the ceiling and floor/upper and lower wall holes. Insert rawl plugs beforehand if necessary.

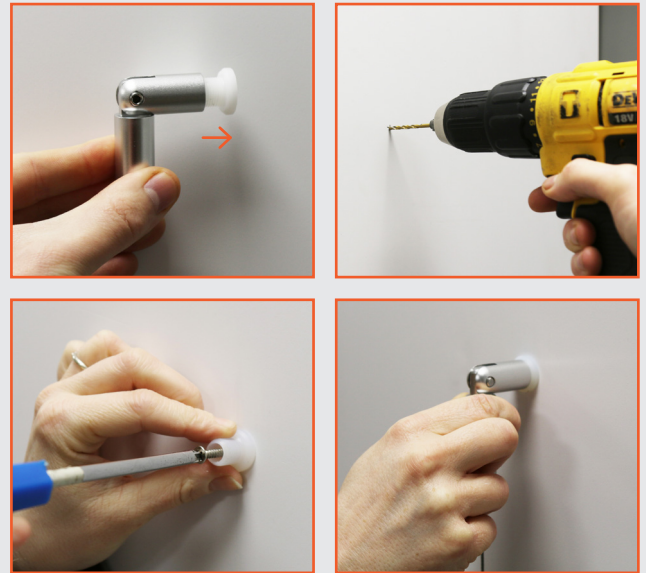
For wall-mounted kits, screw the 4 wall-mount fixings (D) into your 4 fixing plates on the wall. Screw the upper fixings (B) into the upper wall-mount fixings.

For ceiling-to-floor kits, screw the upper fixings (B) into the ceiling fixing plates. Allow the cables to unwind below.

Ceiling to floor:



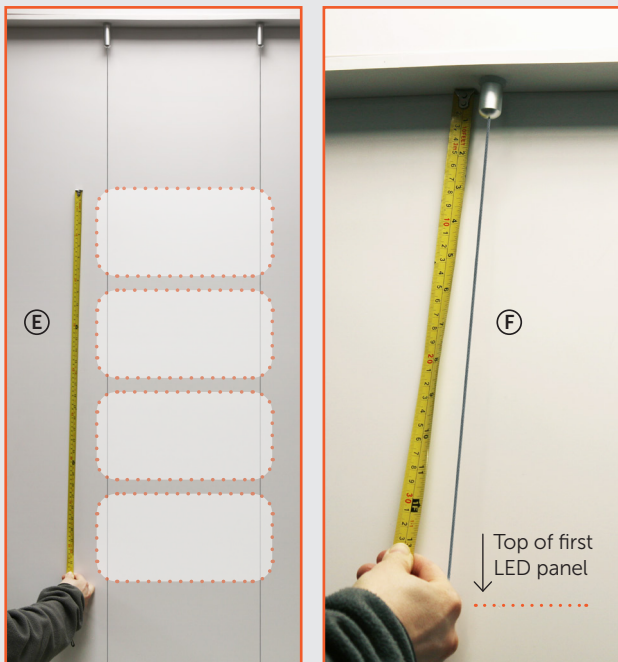
Wall mounted:



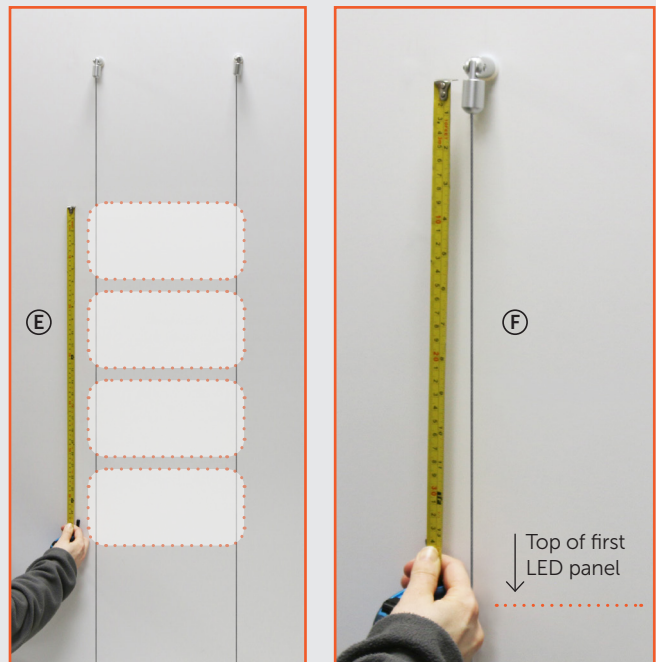
3. Use the measurement (E) taken earlier to work out where you want your LED panels to sit within your window or wall.

Measure the distance between the top of the upper fixings and where you want the top of the first panel to sit (F) - this is the length you need to cut your cables to. Do not cut the cables at this stage.

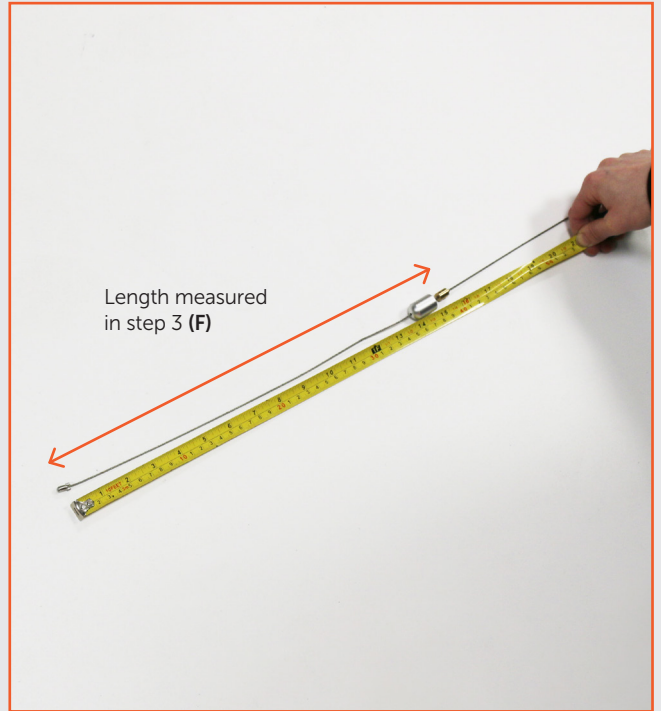
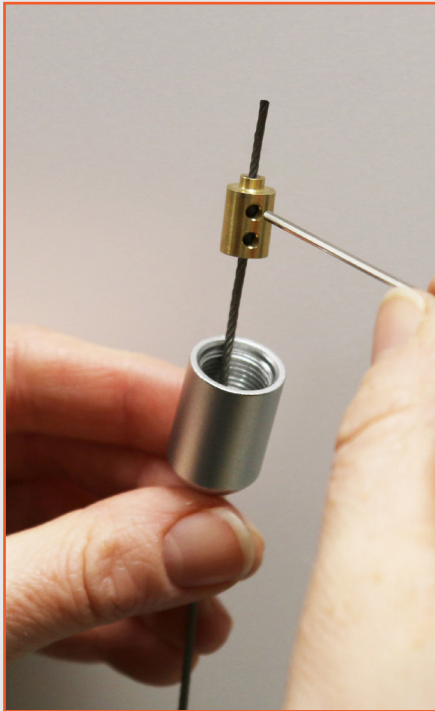
Ceiling to floor:



Wall mounted:



4. Unscrew the upper fixings from the fixing plates (wall-mount fixings for wall-mounted kits). Use the small Allen key provided to loosen the small brass fittings that keep the cables in place. Pull the cables back through the fixings until they reach the length you need to cut.



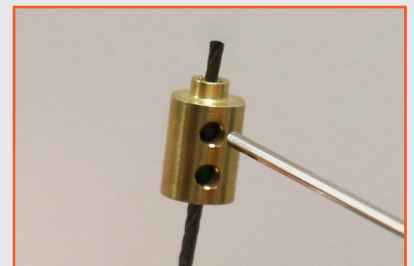
5. Cut the wire above the upper fixings - **do not cut below the fixings** as you will cut off the screws needed to attach the cables to your LED panels.

Tighten the small fittings at the end of the cables, leaving 5mm of cable visible. Screw the upper fixings back into the fixing plates (wall-mount fixings for wall-mounted kits).

Cut above the upper fixings

Feed fixings according to preferred length

Do not cut below the upper fixings



6. Attach your LED panels to the hanging cables using the screws at the end of each cable.

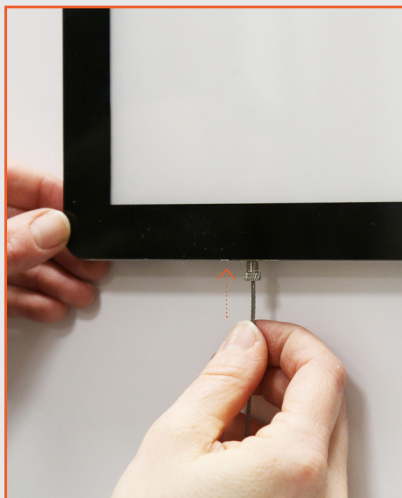
If your LED panel configuration is heavy, please make sure you have at least 1 person supporting the panels while 1 person screws the cables in.

Your display should now hang from the ceiling / upper wall without support, at your desired height.

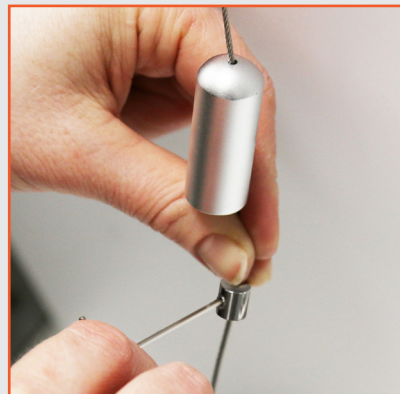


7. Screw the remaining 2 cables into the last LED panel and let the cables and fixings hang below.

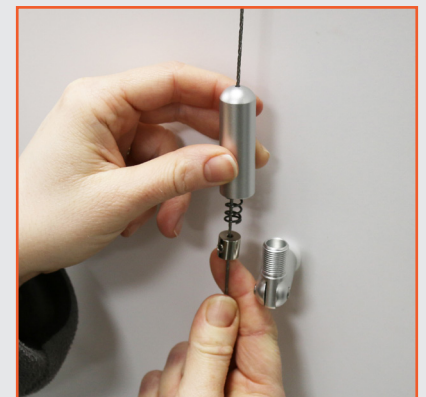
Use the large Allen key provided to undo the small silver fittings attached to the cables inside the lower fixings (C) that keep the cables in place. Slide them up the cables and pull the cables tight towards the floor or wall-mount fixings.



Ceiling to floor:

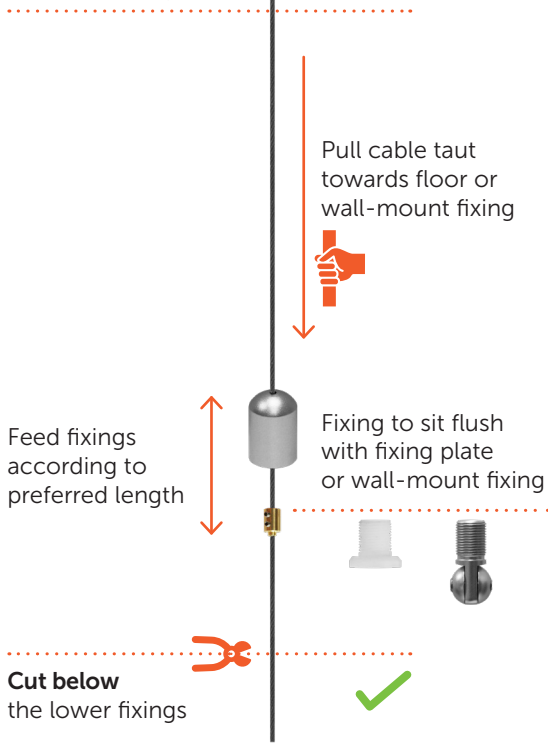


Wall mounted:



Lower fixing guidelines

Do not cut above the lower fixings



8. For ceiling-to-floor kits, re-tighten the fittings so that they sit flush with the top edge of the floor fixing plates.

For wall-mounted kits, re-tighten the fittings so that they sit flush with the top edge of the lower wall-mount fixings (whilst they are pointed upwards at 90°).

Ceiling to floor:



Wall mounted:



9. Cut the cables 5mm below the silver fitting.

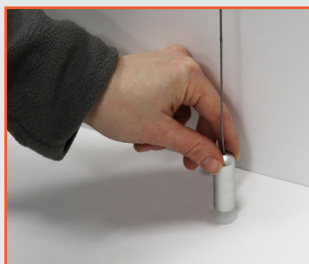
Screw the lower fixings back into the fixing plates. You should feel the tension starting to be taken up just before the lower fixings are screwed fully down.

Remember, the cables are only as strong as your upper fixings.

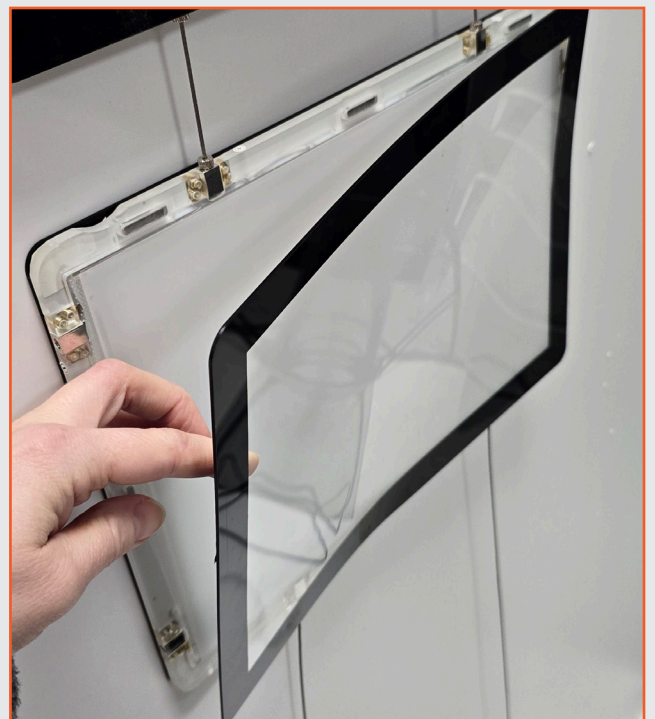
Ceiling to floor:



Wall mounted:



10. Insert graphics on both sides of the panels by simply lifting the magnetic cover open and sliding your posters into place.



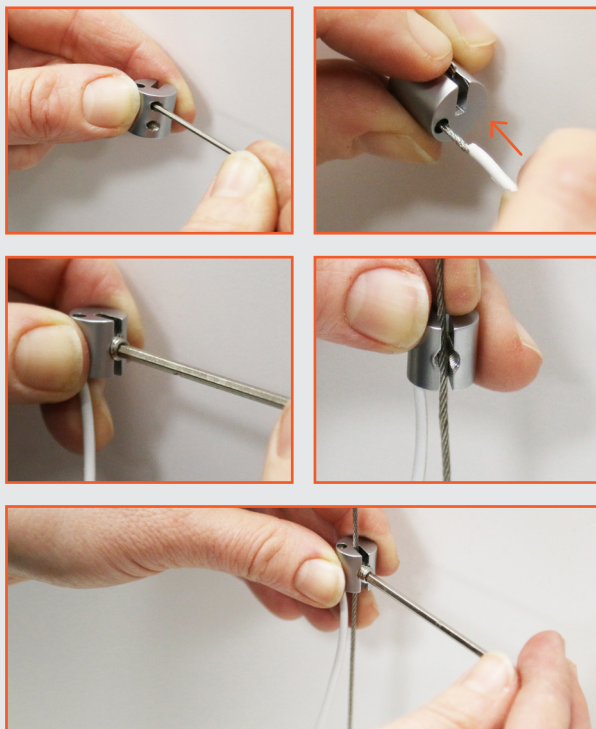
Powering the LEDs

IMPORTANT SAFETY INFORMATION

- Turn the mains power off before making any connections.
- Nothing metallic must cross or connect to the cables other than the light panels. Make sure nothing metallic is in the ceiling, wall or floor, or connected to the screws.

1. Unscrew the 2 small bolts on the side of each power cable fixing using the small Allen key. Take the power cable connector (white), and remove the white plastic caps from the 2 split ends.

Insert a split end into the top of each of the power cable fixings. Use the small Allen key to tighten the small bolts back in place to secure the power cables.



2. Use the large Allen key to unscrew the large bolt on the side of each power cable fixing. Slot a power cable fixing onto each of the lower cables and retighten the bolts to secure in place.



3. Connect the white cable connector, the transformer cable and the mains power cable together. Plug into a socket and your display should instantly illuminate.

If your display is not illuminating, or only part of the display is illuminating, make sure that every light panel is connected in a + then - configuration. If a + is connected to a +, or a - connected to a -, then the electrical circuit is broken and will not power the LEDs.

